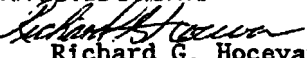


**STANDARD PROCEDURES  
OF  
THE WASHINGTON SUBURBAN SANITARY COMMISSION**

ORIGINATOR	DEPT. & NUMBER	APPROVED BY/DATE	EFFECTIVE DATE	PAGE
John P. Corless Division Head, Water Operations	WOD 90-02	 Richard G. Hovevar General Manager	May 1, 1990	1 OF 8

**SUBJECT**

Emergency Water Use Restrictions for the Bowie Pressure Zone

**Purpose:** This procedure describes the various levels of water use restrictions which may be put in effect in the Bowie Pressure Zone during periods of high demand which would otherwise jeopardize the safety of customers in the zone due to unavailability of adequate fire flow capacity. This procedure defines the affected area and describes the mechanism for determining when use restrictions should be put into effect. It also delineates how the restrictions are to be implemented.

**Affected Area:** This procedure affects all WSSC customers in the areas south of Goddard Space Center and the National Agricultural Research Center, east of Good Luck Road, northeast of State Route 193, north of John Hanson Highway (Route 50), and west of the Patuxent River. This area is highlighted on the map in Appendix E.

**Background:** As of November 1989 a substantial part of the WSSC water system within the affected area:

1. cannot provide fire flows of 1500 gpm or more, and
2. above elevation 200 ft cannot provide fire flow of 1000 gpm.

A substantial portion of development in the area, except single family detached housing projects, is impacted by the first limitation. The second limitation impacts single family detached housing projects as well. These limitations were first identified by the WSSC in 1987 and have since been noted on WSSC comments to the County on service area category change requests.

A review of fire hydrant testing records for the five year period ending November 1989 indicates there has been a steady deterioration of system pressure in the affected area.

A number of WSSC projects have been programmed to relieve this situation. For safety purposes however, until these projects are completed, temporary water use restrictions must be imposed during periods of high demand (typically in the summer months but may be as early as May 1 and as late as September 30).

**Authority:** WSSD law, Art. 29, §9-101, authorizes WSSC to limit or regulate the use and supply of water service in any area on a temporary basis if deemed necessary.

**Restriction Levels:**

This procedure includes three levels of water use restrictions which will be implemented dependent upon the degree of fire flow shortfall in the system.

Level I Restrictions: This is the lowest level of use restriction and primarily depends upon voluntary customer participation to reduce water use during the high demand periods of the day. Specific water restriction guidelines are included in Appendix A. This level is designed to reduce peak hour demand on the water system by smoothing (flattening) the daily variation of system demand. Level I will be initiated when the Bowie standpipe water elevation drops below 285 feet. Part of the implementation process will include notification to the public that there may be further water restriction. It is estimated that this restriction level will reduce peak demand by 15%, with minimal reduction in average daily flows.

Level II Restrictions: This second level will be implemented when Level I restrictions become inadequate to maintain water usage low enough to protect public safety (fire protection of the affected area). It is expected this level of restriction will reduce peak consumption by 30%. Level II will be initiated when Bowie standpipe water elevation drops below 275 feet. Specific restrictions are included in Appendix B.

Level III Restrictions: If Level II restrictions are not sufficient to meet fire flow minimums, Level III restrictions will be implemented. Level III will be initiated when Level II has been effective for seven days and day time high temperatures are expected over 90° for more than five days. In addition to the Level II restrictions, this level includes the shut down of water service to government, school, and large industrial users located in the affected area. A list of these users will be maintained by the Bureau of Administration. It is expected this level of restriction will reduce peak consumption by 35-40%.

**Notification:** Two mechanisms will be used to notify customers when restrictions have been implemented or changed:

1. A news release will be issued at the time of implementation or any status change in restriction conditions, and literature including Appendix A & B will be made available at County libraries, in the affected area, by PAO. An example news release is found in Appendix C.
2. The Operations emergency "info line" will be used to provide customers with a recorded message indicating the current status of water restrictions.

**Implementation:** These restrictions will be implemented by direction of the General Manager. The counties will be notified through the General Manager's Office. Notification, within WSSC, will be coordinated

by the Water Operations Division. When any restrictions are implemented, WSSC will immediately discontinue all routine flushing and large meter testing in the affected area. Maintenance Services will upgrade response priority for all reported leaks in the affected area. Meter Maintenance will individually notify major fire hydrant meter users likely to be working in the affected area. When Level III restrictions are implemented, affected large users will be notified by direct phone call from the Customer Services Division.

When possible, implementation of restrictions should be progressive in nature (i.e., Level I, to Level II, to Level III, to Level II, to Level I). Due to the variability of factors influencing water use, a restriction level, once implemented, will generally not be downgraded for a 14 day period.

The Water Operations Division is responsible for tracking water demand in the affected area and notifying the General Manager when allowable limits have been exceeded. Once the General Manager has initiated or changed a restriction level, the Water Operations Division will be responsible for coordinating all necessary notifications as depicted in Appendix D.

Levels I or II will generally be downgraded after 14 days if both the demand has dropped below the initiation level and long range weather forecasts call for diminished water demand. Fourteen days is intended only as a guide; the period will be appropriately adjusted up or down depending upon actual conditions. Level III will be downgraded at the discretion of the General Manager.

**Distribution List:**

MASTER VOLUME LIST:

General Manager's Office  
Human Resources Division  
Internal Audit Office  
Secretary's Office

OUTSIDE DISTRIBUTION:

Montgomery County Office  
of Emergency Preparedness  
Prince George's County Office  
of Emergency Preparedness  
Montgomery County Office of  
Environmental Protection  
Prince George's County Office  
of Environmental Resources

OTHER DISTRIBUTION:

General Counsel  
Office of Management Services  
Office of Budget and Financial Planning  
Department of Engineering  
Department of Maintenance and Operations  
Department of Finance and Administration  
Bureau of Planning and Design  
Bureau of Maintenance  
Bureau of Supply and Resource Control  
Bureau of Operations  
Bureau of Finance and Administration  
Bureau of Administration  
Office of Security Services  
Planning and Engineering Division  
Systems Maintenance Division  
Maintenance Services Division  
Public Affairs Office  
Customer Services Division  
Meter Maintenance Section

## Appendix A

## Level I Restrictions

- A. Restrict the use of hoses, sprinklers, or other means for sprinkling or watering of shrubbery, trees, lawns, grass, plants, vines, gardens, vegetables, flowers, or any other vegetation. The restriction will be based on address with the last digit in the address being the key (e.g., on odd days of the month, i.e., 1st, 3rd, 23rd, those with the last digit being odd may water).
- B. Restrict the use of water for washing automobiles, trucks, trailers, trailer-houses, or any other type of mobile equipment, except where automatic car washing equipment is employed and a recirculating system is used, which reuses at least 50% of the water. Restriction, again, depends on odd/even street address.
- C. Except for make-up (e.g., compensation for evaporation and/or spillage), swimming or wading pools are only to be filled or refilled by tank trucks supplied with water from outside the restricted area.
- D. Restaurants, drive-ins, fast food, and miscellaneous eating facilities:
1. Discontinue all dish washing. (Paper service could be used in lieu of glassware.)
  2. Discontinue use of garbage disposal.
  3. Reduce floor washing in customer area. Sweep only and damp mop.
- E. Discontinue operation of all water-demanding amenities such as ornamental fountains, waterfalls, and reflecting ponds.
- F. Prohibit the washing of streets, driveways, parking lots, service station aprons, apartments, sidewalks, exterior of homes, office buildings or other outdoor surfaces. The use of buckets of water for such purposes is permitted.
- G. The use of water from firehydrants is prohibited for any purpose other than fire extinguishing or water interconnection, except for essential static or residual fire plan tests.
- H. Washing machines to be loaded to full capacity when used. Businesses such as, but not limited to, beauty salons, barber shops, and car washes that wash linens in on-premises washing machines are to load to full capacity and at minimum wash cycle.

## Appendix B

## Level II Restrictions

In Level II, the following Level I restrictions have been expanded:

- A. Prohibit all use of hoses, sprinklers, or other means for sprinkling or watering of shrubbery, trees, lawns, grass, plants, vines, gardens, vegetables, flowers, or any other vegetation. The use of buckets of water for such vegetation is permitted.
- B. Prohibit all use of water for washing automobiles, trucks, trailers, trailer-houses, or any other type of mobile equipment, except where automatic car washing equipment is employed and a recirculating system is used, which reuses at least 50% of the water.
- C. Swimming or wading pools are only to be filled or refilled by tank trucks supplied with water from outside the restricted area. This includes make-up water.
- D. Restaurants, drive-ins, fast food, and miscellaneous eating facilities:
  - 1. Discontinue all dish washing. (Paper service could be used in lieu of china and glassware.)
  - 2. Discontinue use of garbage disposal.
  - 3. Reduce floor washing in customer area. Sweep only and damp mop.
  - 4. No water to be served except on request.

The following Level I restrictions remain unchanged in Level II:

- E. Discontinue operation of all water-demanding amenities such as ornamental fountains, waterfalls, and reflecting ponds.
- F. Prohibit the washing of streets, driveways, parking lots, service station aprons, apartments, sidewalks, exterior of homes, office buildings or other outdoor surfaces. The use of buckets of water for such purposes is permitted.
- G. The use of water from fire hydrants is prohibited for any purpose other than fire extinguishing or water interconnection, except for essential static or residual fire plan tests.
- H. Washing machines to be loaded to full capacity when used. Businesses such as, but not limited to, beauty salons, barber shops, and car washes that wash linens in on-premises washing machines are to load to full capacity and at minimum wash cycle.

Level II includes the following additional restrictions:

- I. As a goal, residents should (voluntarily) limit water consumption (one shower, one flush per person per day, one laundry per family every other day).
- J. Hotels, motels, inns and boarding houses:
  - 1. Change bed linen every other day except when there is a change of occupant.
  - 2. Shut off water supply to all public convenience ice cube making machines.
  - 3. Instruct maids to use buckets for bathroom cleaning.

## Appendix C

## Example - Press Release

FOR IMMEDIATE RELEASE  
May 1, 1990  
Contact: Public Affairs

WSSC Issues Bowie Area Emergency Water Restrictions  
— Level I Restrictions —

The Washington Suburban Sanitary Commission today issued emergency water restrictions affecting the Bowie area due to high consumer demand and limited fire flow capacity.

The area south of Goddard Space Center and the National Agricultural Research Center, east of Good Luck Road, northeast of state route 193, and north of John Hanson Highway (Rt. 50) will be affected. Although WSSC has a number of projects underway to relieve the problem, residents are asked to start employing the following water conservation practices immediately:

- ◆ use of hoses and sprinklers should be restricted to odd days of the month for customers whose address ends with an odd number; similarly, even addresses are limited to even days;
- ◆ operation of all ornamental fountains, waterfalls, reflecting ponds and the like should cease;
- ◆ washing of vehicles and other mobile equipment is restricted to the same odd/even day rule, except for car washes which recycle at least 50% of their water;
- ◆ washing streets, driveways, parking lots, house exteriors and other outdoor surfaces is prohibited;
- ◆ swimming or wading pools should not be filled or refilled; make-up water is okay (Tank trucks may be used to bring water in from outside of the area.);
- ◆ fire hydrant use is prohibited for any purpose other than fire extinguishing;
- ◆ all business and residential washing machines should be loaded to capacity before use; and
- ◆ eating establishments should turn off dishwashing equipment and all water not required for food or drink preparation; discontinue use of garbage disposals; and sweep and damp mop floors in customer areas.

The restrictions are being issued because increased development has outpaced the Commission's attempts to update and improve system pressure in the Bowie area. Fire hydrant tests conducted over the past five years indicate a steady deterioration of system pressure.

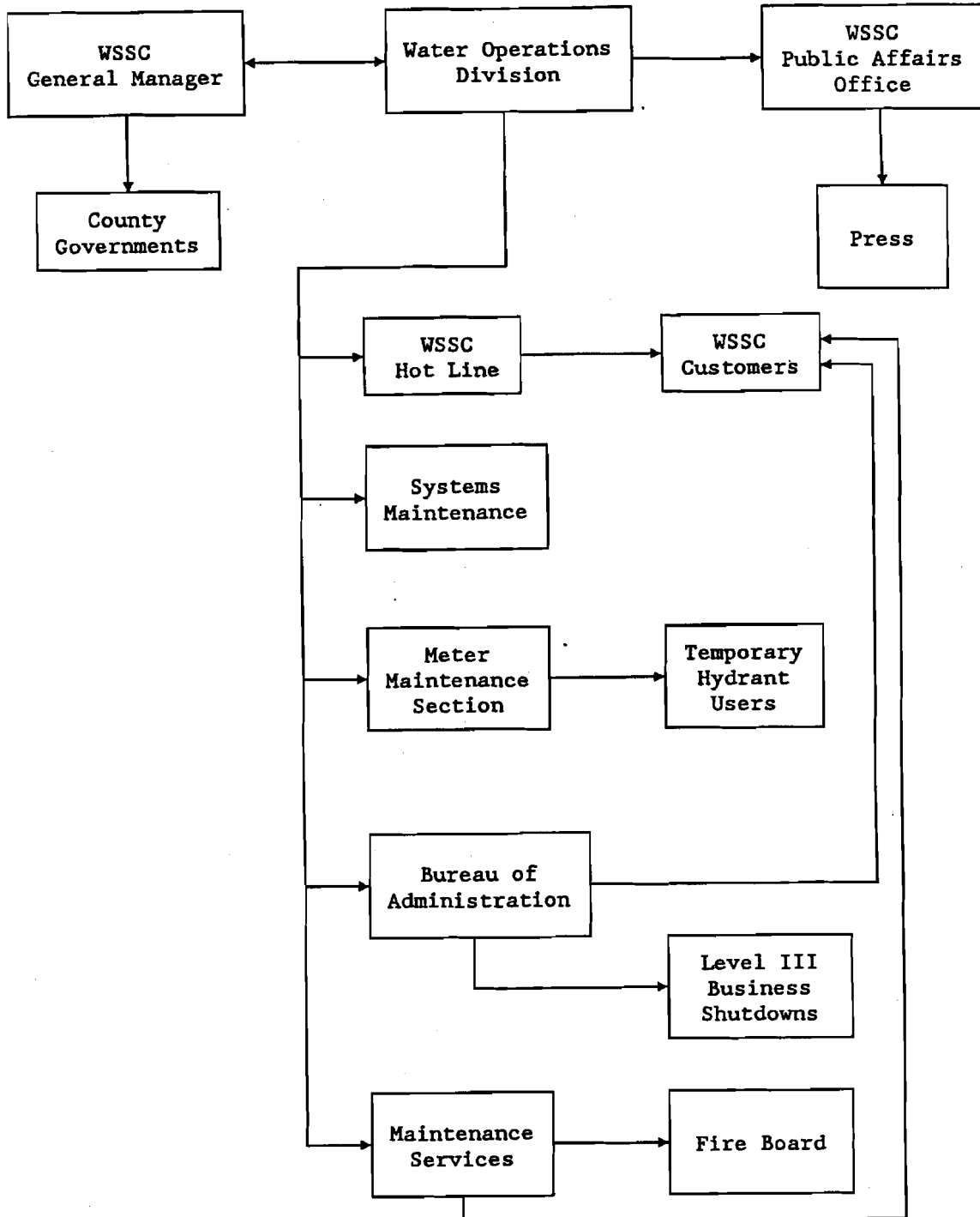
For more information contact the Public Affairs Office at 699-4172. Printed copies of the restrictions are available at County libraries in the affected area.

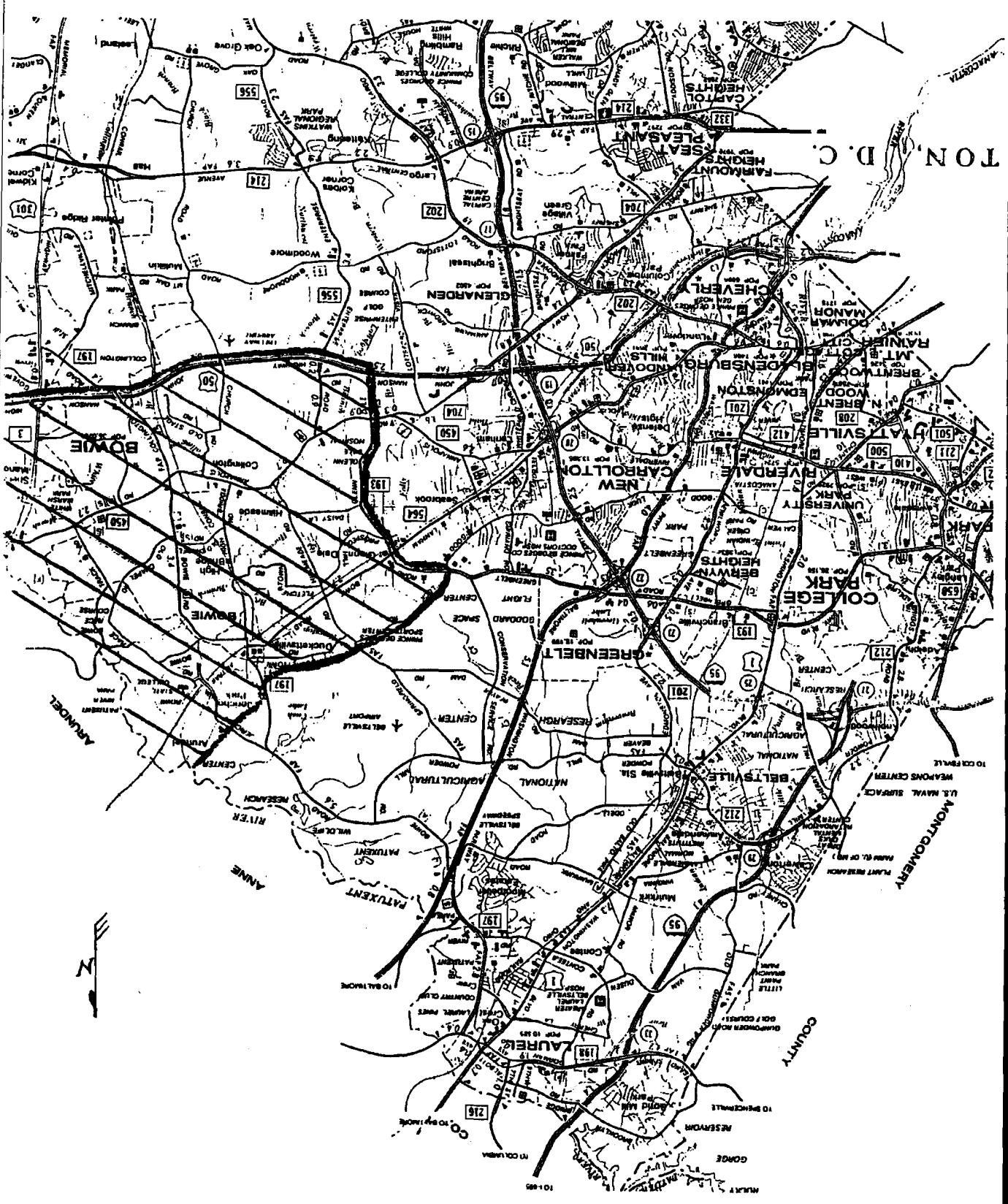
These Level I restrictions are expected to remain in effect for at least 14 days. If conditions worsen, more comprehensive Level II or III restrictions may be required. Changes in restriction level will be communicated through news releases. Additionally, during the emergency, customers can call 699-4406 to get a recorded update on the current restriction level.

###

Appendix D

NOTIFICATION





The Bowie Service Area

Appendix E